

WIRE TO PCB TYPE TERMINAL BLOCK — ETB55 SERIES



MOUNT TYPE / BARRIER TYPE

PITCH=6.35mm

FEATURES

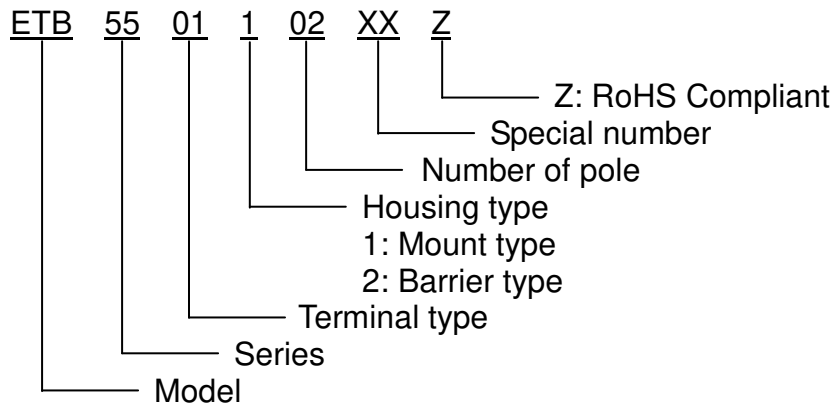
- Can be supplied in any number of positions
- Special wire protector design to ensure reliable wire clamping
- UL 94V-0 grade fire retardant engineering plastic used for the housing
- Be capable of clamping a wide range of wire diameters
- Wide choice of pitch & terminal

SPECIFICATIONS

- Pitch 6.35mm (0.25 inch)
- Wire range 18~22 AWG
- Rating 10 Amp, 300 VAC
- Housing material Thermoplastic (UL 94V-0) Black
- Terminals Tin plated over Brass
- Screws Nickel plated over Steel
- Dielectric strength 2000 VAC (Min.)
- Insulation resistance 1000 MΩ, 500 VDC



PART NUMBERING SYSTEM

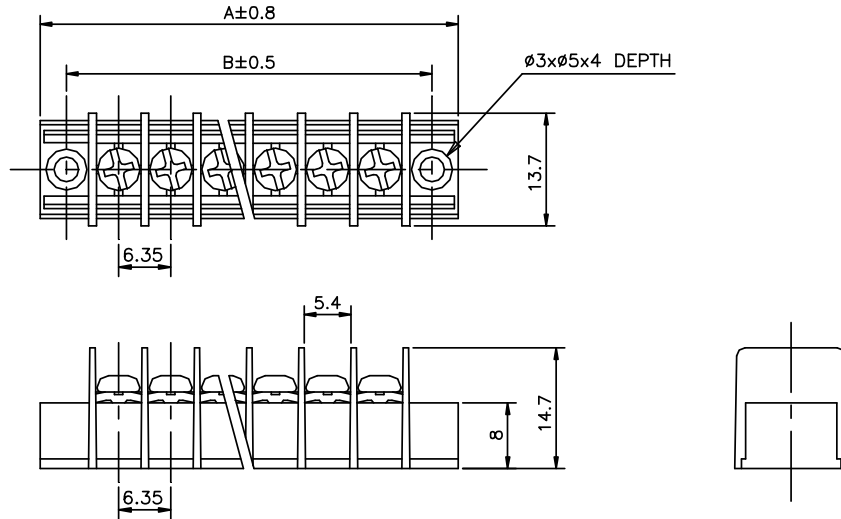


**WIRE TO PCB TYPE TERMINAL BLOCK
— ETB55 SERIES**

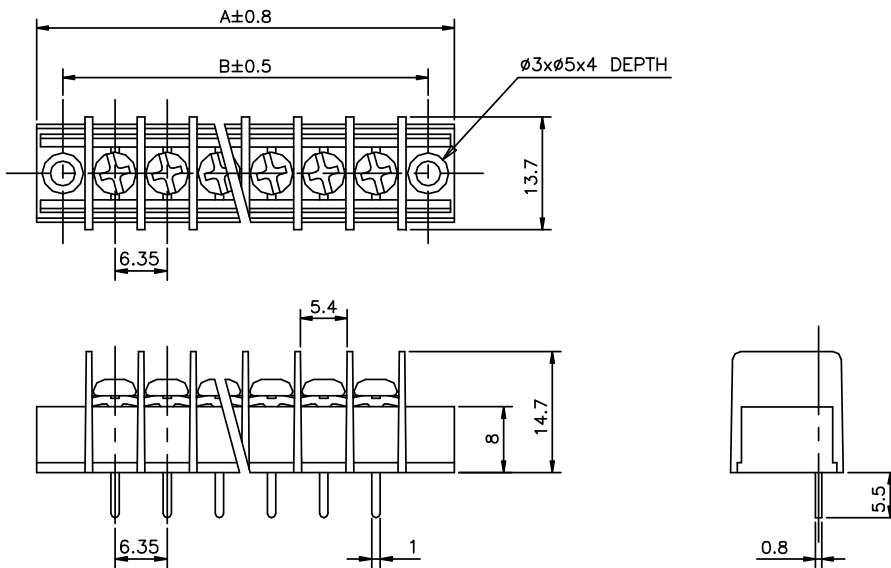


■ DRAWING (MOUNT TYPE)

ETB55001**



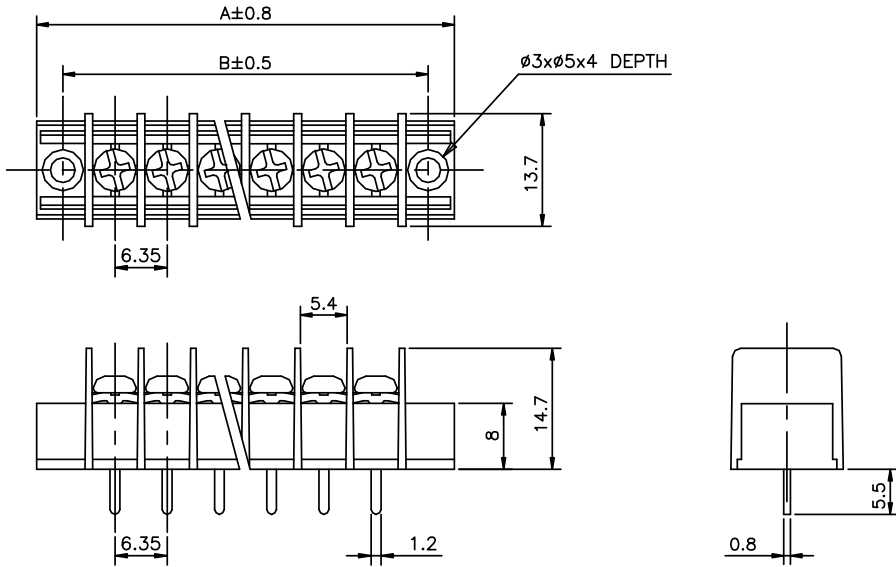
ETB55011**



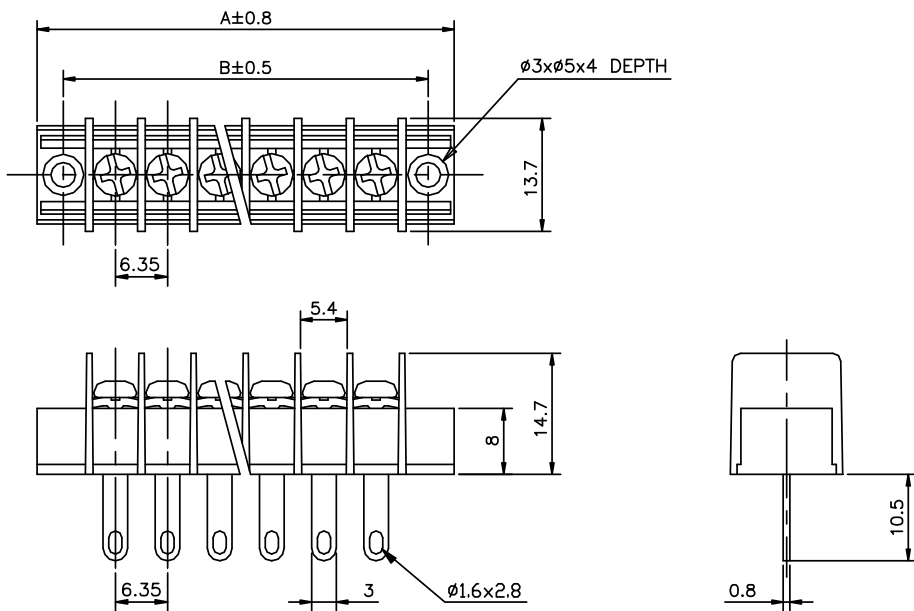
**WIRE TO PCB TYPE TERMINAL BLOCK
— ETB55 SERIES**



ETB55021**



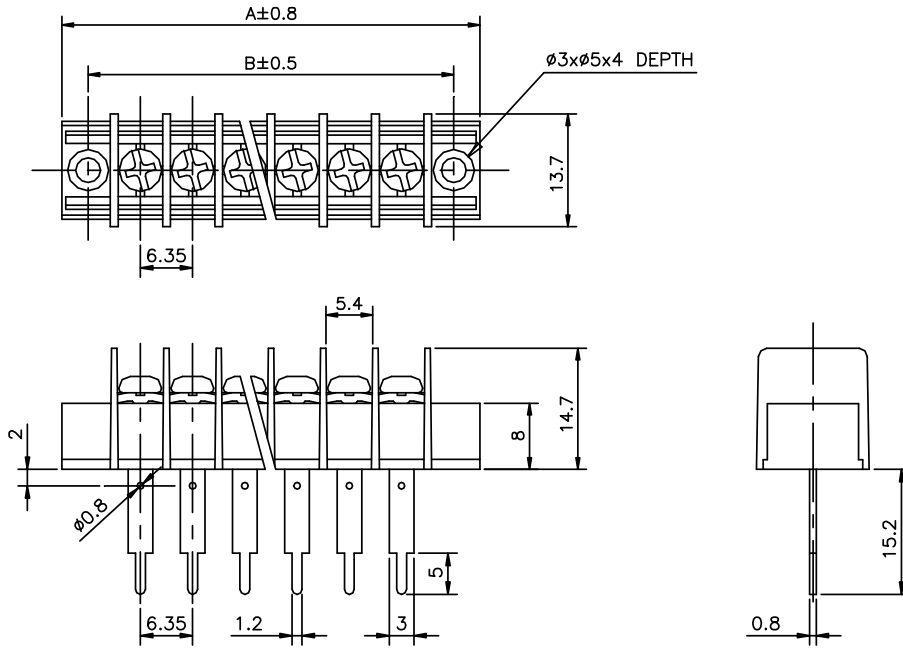
ETB55031**



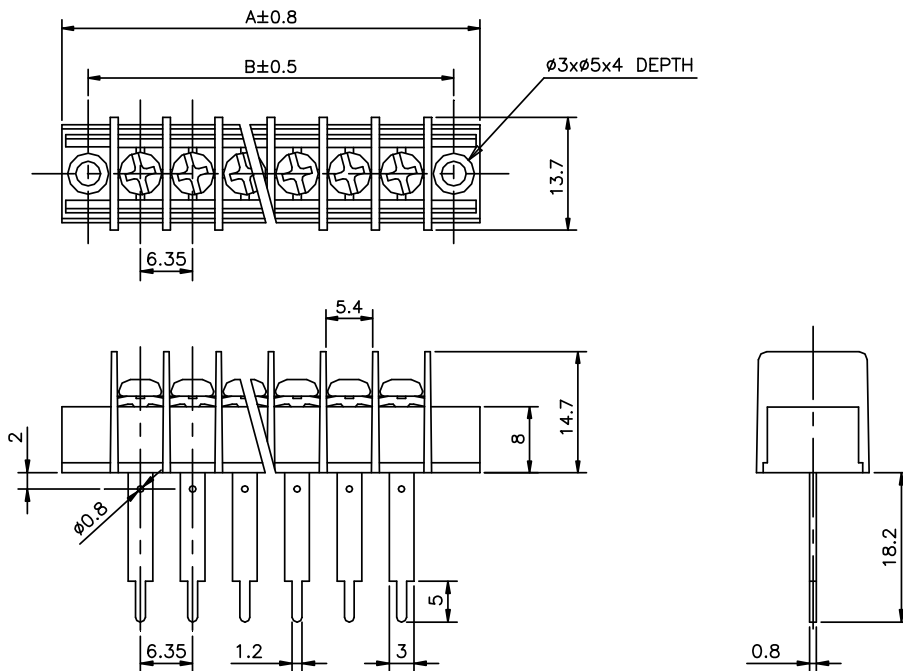
WIRE TO PCB TYPE TERMINAL BLOCK — ETB55 SERIES



ETB55041**



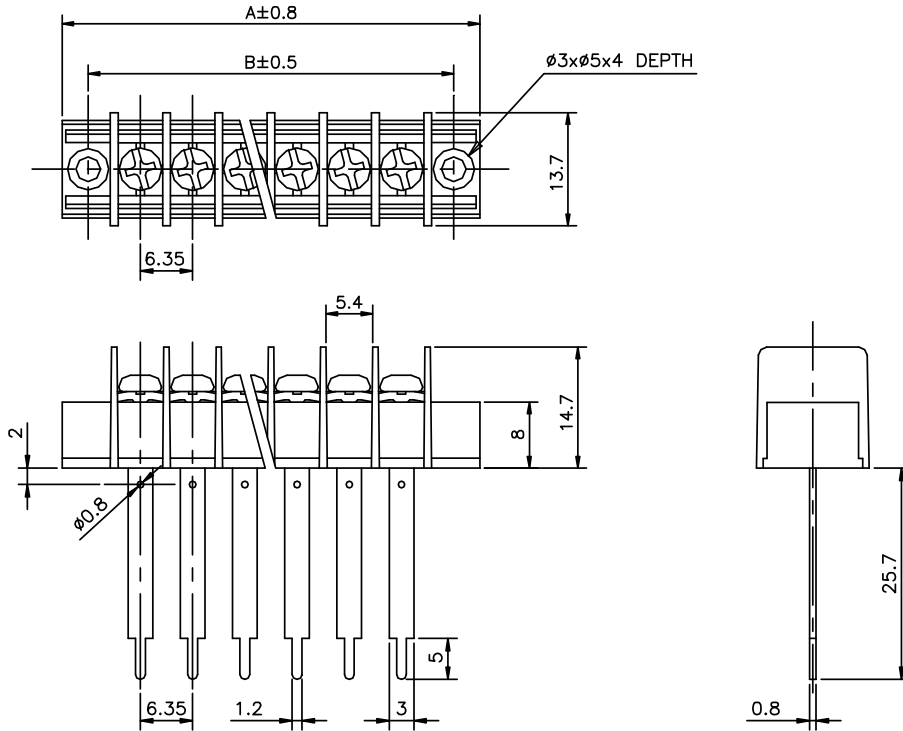
ETB55051**



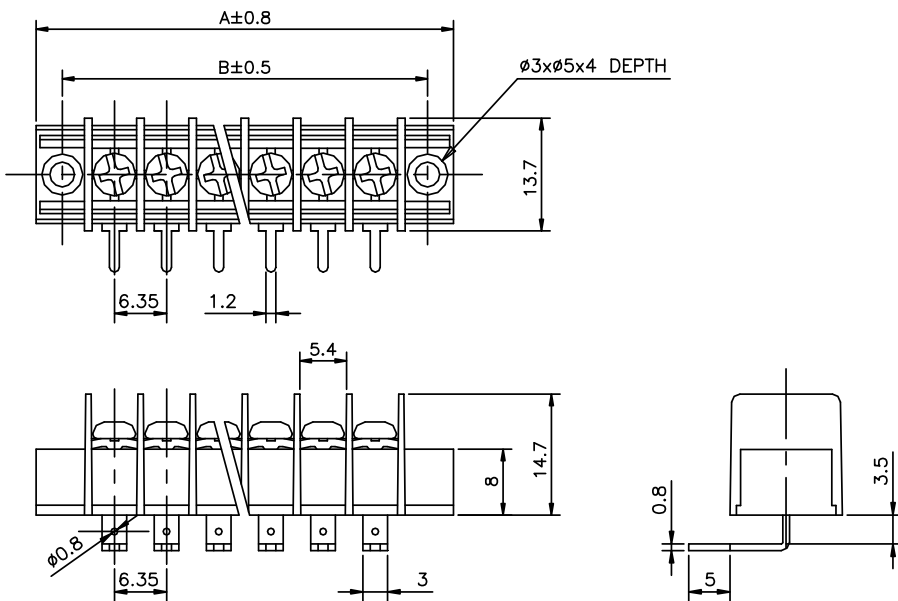
**WIRE TO PCB TYPE TERMINAL BLOCK
– ETB55 SERIES**



ETB55061**



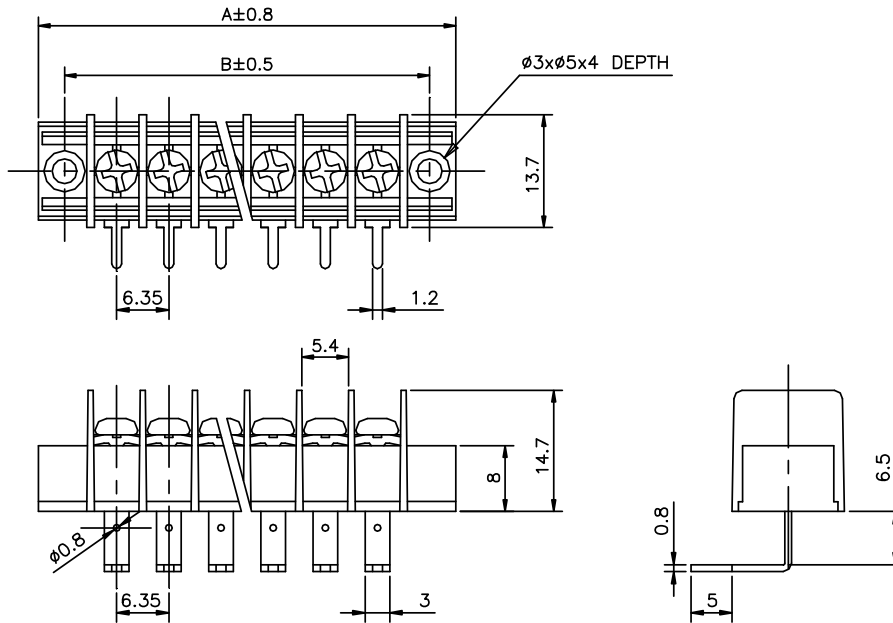
ETB55071**



WIRE TO PCB TYPE TERMINAL BLOCK – ETB55 SERIES



ETB55081**



mm to inch

mm	0.8	1	1.2	1.6	2	2.8	3	3.5	4	5	5.4	5.5	6.35	6.5	8
inch	0.031	0.039	0.047	0.063	0.079	0.110	0.118	0.138	0.157	0.197	0.213	0.217	0.250	0.256	0.315
mm	10.5	13.7	14.7	15.2	18.2	25.7									
inch	0.413	0.539	0.579	0.598	0.717	1.012									

DIMENSIONS OF MOUNT TYPE

**NUMBER OF POLE 02~30.

POLE DIM.	2	3	4	5	6	7	8	9	10	11	12
A ± 0.8	25.4 (1.000)	31.75 (1.250)	38.10 (1.500)	44.45 (1.750)	50.80 (2.000)	57.15 (2.250)	63.50 (2.500)	69.85 (2.750)	76.20 (3.000)	82.55 (3.250)	88.90 (3.500)
B ± 0.5	19.05 (0.750)	25.40 (1.000)	31.75 (1.250)	38.10 (1.500)	44.45 (1.750)	50.80 (2.000)	57.15 (2.250)	63.50 (2.500)	69.85 (2.750)	76.20 (3.000)	82.55 (3.250)
POLE DIM.	13	14	15	16	17	18	19	20	21	22	23
A ± 0.8	95.25 (3.750)	101.60 (4.000)	107.95 (4.250)	114.30 (4.500)	120.65 (4.750)	127.0 (5.000)	133.35 (5.250)	139.70 (5.500)	146.05 (5.750)	152.40 (6.000)	158.75 (6.250)
B ± 0.5	88.90 (3.500)	95.25 (3.750)	101.60 (4.000)	107.95 (4.250)	114.30 (4.500)	120.65 (4.750)	127.00 (5.000)	133.35 (5.250)	139.70 (5.500)	146.05 (5.750)	152.40 (6.000)
POLE DIM.	24	25	26	27	28	29	30				
A ± 0.8	165.10 (6.500)	171.45 (6.750)	177.80 (7.000)	184.15 (7.250)	190.50 (7.500)	196.85 (7.750)	203.20 (8.000)				
B ± 0.5	158.75 (6.250)	165.10 (6.500)	171.45 (6.750)	177.80 (7.000)	184.15 (7.250)	190.50 (7.500)	196.85 (7.750)				

WIRE TO PCB TYPE TERMINAL BLOCK – ETB55 SERIES



DIMENSIONS OF BARRIER TYPE

**NUMBER OF POLE 02~32.

POLE DIM.	2	3	4	5	6	7	8	9	10	11	12
A±0.8	14.0 (0.551)	20.35 (0.801)	26.70 (1.051)	33.05 (1.301)	39.40 (1.551)	45.75 (1.801)	52.10 (2.051)	58.45 (2.301)	64.80 (2.551)	71.15 (2.801)	77.50 (3.051)
B±0.5	6.35 (0.250)	12.70 (0.500)	19.05 (0.750)	25.40 (1.000)	31.75 (1.250)	38.10 (1.500)	44.45 (1.750)	50.80 (2.000)	57.15 (2.250)	63.50 (2.500)	69.85 (2.750)
POLE DIM.	13	14	15	16	17	18	19	20	21	22	23
A±0.8	83.85 (3.301)	90.20 (3.551)	96.55 (3.801)	102.90 (4.051)	109.25 (4.301)	115.6 (4.551)	121.95 (4.801)	128.30 (5.051)	134.65 (5.301)	141.00 (5.551)	147.35 (5.801)
B±0.5	76.20 (3.000)	82.55 (3.250)	88.90 (3.500)	95.25 (3.750)	101.60 (4.000)	107.95 (4.250)	114.30 (4.500)	120.65 (4.750)	127.00 (5.000)	133.35 (5.250)	139.70 (5.500)
POLE DIM.	24	25	26	27	28	29	30	31	32		
A±0.8	153.70 (6.051)	160.05 (6.301)	166.40 (6.551)	172.75 (6.801)	179.10 (7.051)	185.45 (7.301)	191.80 (7.551)	198.15 (7.801)	204.50 (8.051)		
B±0.5	146.05 (5.750)	152.40 (6.000)	158.75 (6.250)	165.10 (6.500)	171.45 (6.750)	177.80 (7.000)	184.15 (7.250)	190.50 (7.500)	196.85 (7.750)		