

# SCREWLESS TYPE TERMINAL BLOCK – ETBM37 SERIES



**SCREWLESS TYPE**

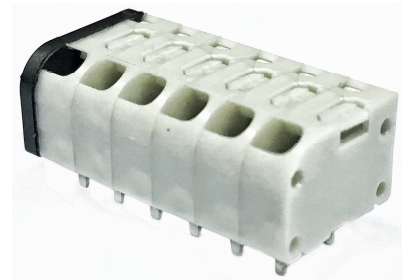
**PITCH=3.5 / 7.0mm**

## FEATURES

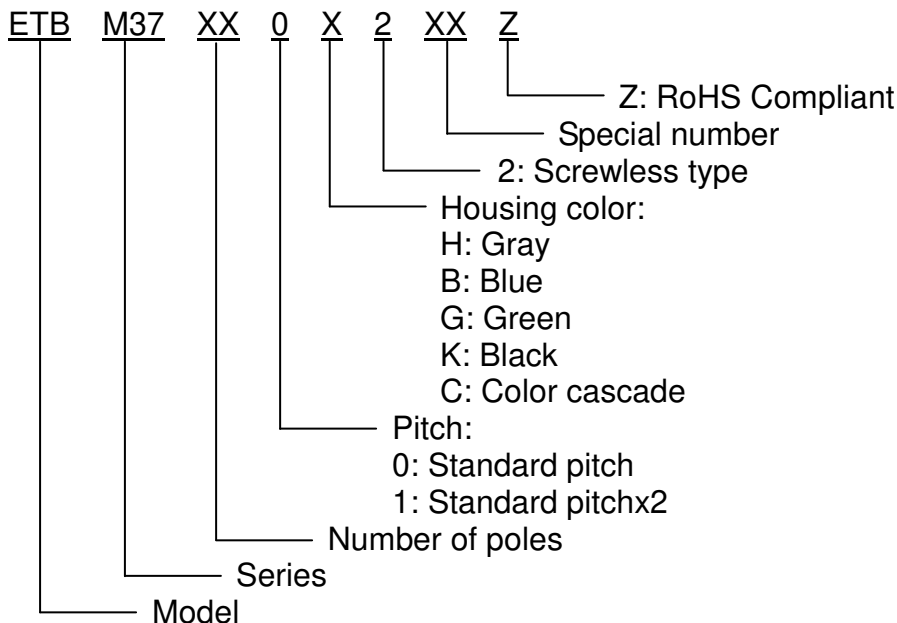
- Miniature size low profile of 7.5mm
- Different color combination for easy identification
- Easy to assemble for any number of positions
- End stackable without any loss of P.C.B. space
- UL 94V-0 grade fire retardant engineering plastic used for the housing
- Be capable of clamping a wide range of wire diameters
- Screwless design can reduce time for connecting wire

## SPECIFICATIONS

- Pitch 3.5mm, 7.0mm
- Wire range 24~18 AWG
- No. of pole per block 2P to 20P
- Rating 5 Amp, 300 VAC
- Housing PA66
- Terminals Tin plated over Copper Alloy
- Push button PA66
- Operating temperature -30°C ~ +105°C  
(includes temperature rise limit)
- Stripping length 7mm
- UL Pending 300V, 5A, 24~18 AWG



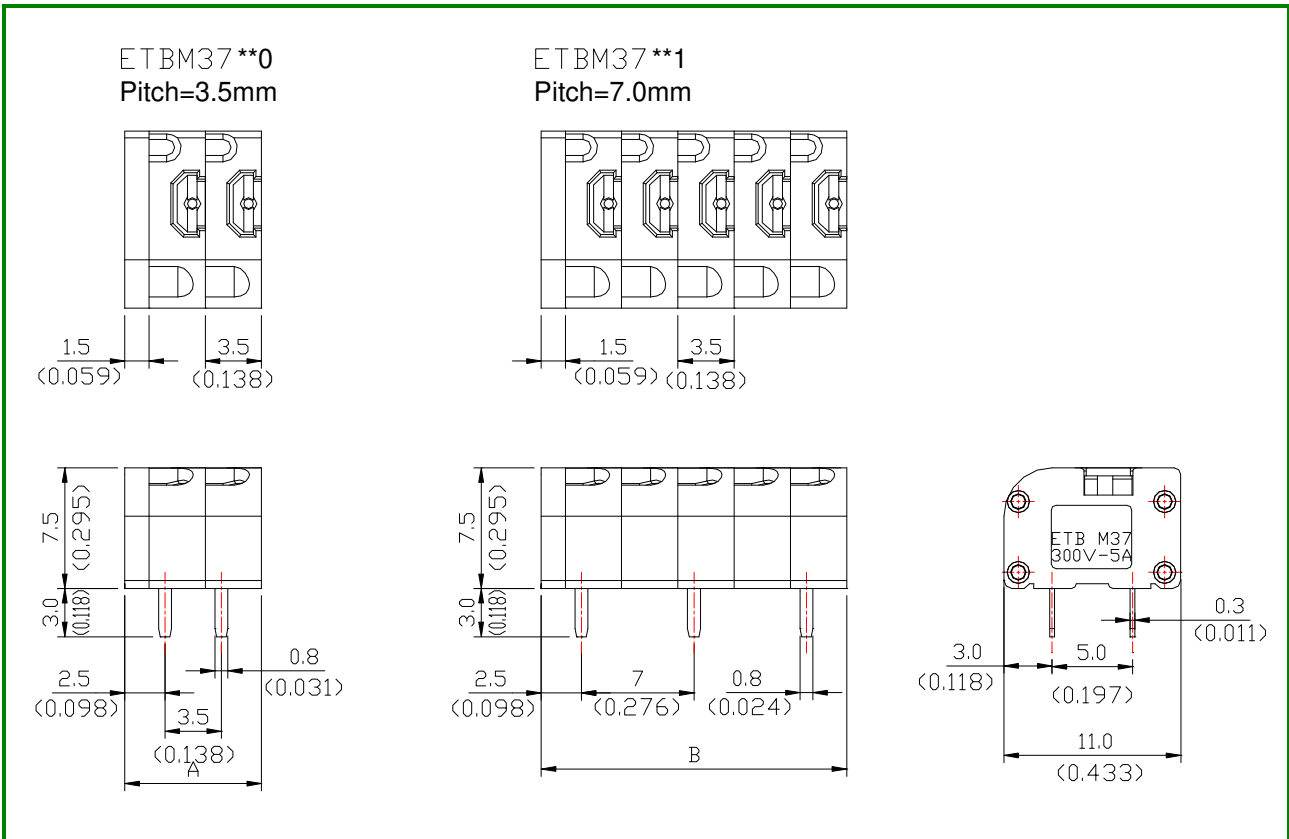
## PART NUMBERING SYSTEM



# SCREWLESS TYPE TERMINAL BLOCK - ETBM37 SERIES



## ■ DRAWING



POLE DIM.	2	3	4	5	6	7	8	9	10	11	12	13
A	8.5 (0.335)	12.0 (0.472)	15.5 (0.610)	19.0 (0.748)	22.5 (0.886)	26.0 (1.024)	29.5 (1.161)	33.0 (1.299)	36.5 (1.437)	40.0 (1.575)	43.5 (1.713)	47.0 (1.850)
B	12.0 (0.472)	19.0 (0.748)	26.0 (1.024)	33.0 (1.299)	40.0 (1.575)	47.0 (1.850)	54.0 (2.126)	61.0 (2.402)	68.0 (2.677)			
POLE DIM.	14	15	16	17	18	19	20					
A	50.5 (1.988)	54.0 (2.126)	57.5 (2.264)	61.0 (2.402)	64.5 (2.539)	68.0 (2.677)	71.5 (2.815)					