

HIGH POWER TYPE TERMINAL BLOCK — ETB73 SERIES

**CLAMPING TYPE**

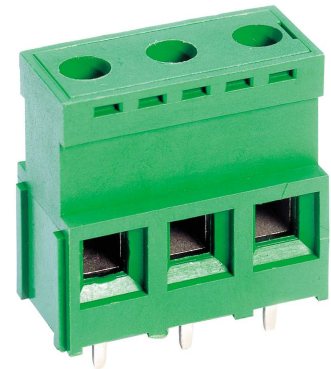
PITCH=9.0 / 18.0mm

FEATURES

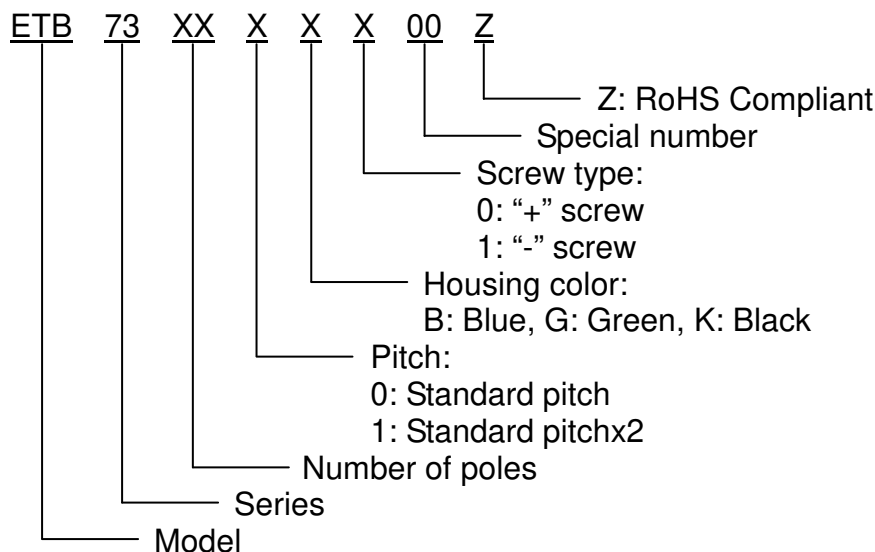
- Designed for high power application
- Easy to assemble for any number of positions
- End stackable without any loss of P.C.B. space
- Special wire protector design to ensure reliable wire clamping
- UL 94V-0 grade fire retardant engineering plastic used for the housing
- Be capable of clamping a wide range of wire diameters
- Compact size for P.C.B.

SPECIFICATIONS

- Pitch 9.0mm, 18.0mm
- Wire range 24~10 AWG
- No. of pole per block 2P or 3P
- Rating 35 Amp, 300 VAC
- Housing PBT
- Terminals Tin plated over Copper Alloy
- Screws M3.5x0.6P, Zinc plated over Steel
- Wire case Nickel plated over Copper Alloy
- Stripping length 10mm
- Torque 1.13N-m (10 lb-in) (Tested by manual torque screwdriver)
- Operating temperature -30°C~+110°C (Includes temperature rise limit)
- UL Approval 300V, 35A, 24~10 AWG
- TUV Approval 450V, 40T100, 0.2 to 4.0 mm²



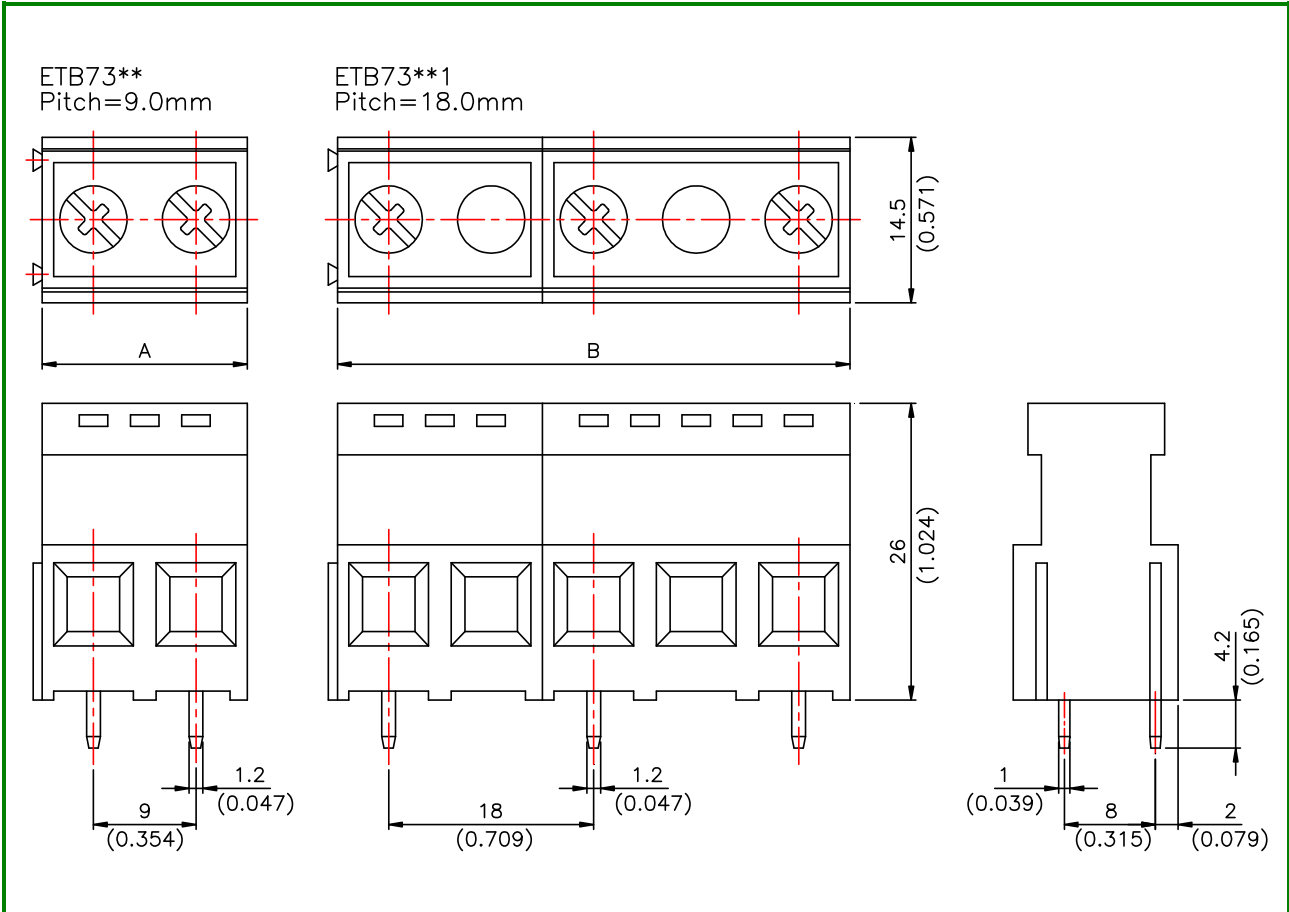
PART NUMBERING SYSTEM



HIGH POWER TYPE TERMINAL BLOCK – ETB73 SERIES



DRAWING



POLE DIM.	2	3	4	5	6	7	8	9	10	11	12	13
A	19.0 (0.748)	28.5 (1.122)	38.0 (1.496)	47.5 (1.870)	57.0 (2.244)	66.5 (2.618)	76.0 (2.992)	85.5 (3.366)	95.0 (3.740)	104.5 (4.114)	114.0 (4.488)	123.5 (4.862)
B	28.5 (1.122)	47.5 (1.870)	66.5 (2.618)	85.5 (3.366)	104.5 (4.114)	123.5 (4.862)	142.5 (5.610)	161.5 (6.358)	180.5 (7.106)	199.5 (7.854)	218.5 (8.602)	
POLE DIM.	14	15	16	17	18	19	20	21	22	23	24	
A	133.0 (5.236)	142.5 (5.610)	152.0 (5.984)	161.5 (6.358)	171.0 (6.732)	180.5 (7.106)	190.0 (7.480)	199.5 (7.854)	209.0 (8.228)	218.5 (8.602)	228.0 (8.976)	