

SPECIFICATIONS

- RATING** : Ith 5A/ 250VAC resistive load 3A/250VAC.
- CONTACT RESISTANCE** : 50MΩ max. @ 1A 12VDC (initial value).
- INSULATION RESISTANCE** : 1, 000 MΩ min. at 500VDC.
- DIELECTRIC STRENGTH** : 2, 000V RMS @ sea level.
- OPERATION TEMPERATURE** : -20°C to 55°C.
- ELECTRICAL LIFE** : 50, 000 make-and-break cycles at full load.
- MECHANICAL LIFE** : Momentary 1, 000, 000 cycles / Self-lock 500, 000 cycles.
- TORQUE** : 5~14Nm.
- OPERATION PRESSURE** : 1 Pole 2.5 ± 1N. / 2 Pole 3.5 ± 1N
- TRAVEL** : About 3.2mm.
- INGRESS PROTECTION** : IP67, IK10(Stainless).

RU models available, consult sales representatives.

MATERIALS

- BUSHING** : Stainless Steel / Brass / Aluminum alloy.
- BASE** : PBT(UL 94-V0), PC(UL 94-V2).
- ACTUATOR** : PC(UL 94-V2) ; Stainless Steel / Brass / Aluminum alloy.
- INNER ASSEMBLY** : POM / PA66.
- SPRING** : Spring steel.
- SEALING** : Silicone.
- O-Ring** : Silicone.
- TERMINAL** : Brass, with silver or gold plated.
- CONTACT** : Brass, coin silver, with silver or gold plated.
- HEX NUT** : Nickel plated brass.

PART NUMBERING SYSTEM

PB	19	-						-			-		
Mounting Hole Dia.	Body Type	Actuator Type	Contact Configuration	Operating Type	Light Type	Led Color	Led Voltage/20mA	Termination	Terminal Plating				
			1 1NO 1NC	0 Momentary	0 W/O resistor	24 24V	24 24V	S Silver					
			2 2NO 2NC	1 Lock	3 3V	36 36V	36 36V	G Gold					
					6 6V	110 110V	110 110V						
					12 12V	220 220V	220 220V						

Body type

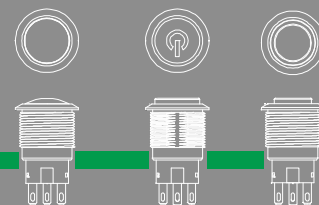
Unit: Inch/mm

Only for 0, R, D, E light	Only for P, E1 light
A0 Stainless(Natural)(Std.), Round B1 Brass(Mirror Chrome Plated), Round B2 Brass(Nickel Plated), Round C3 Al alloy(Black Anodized) (Std.), Round	D0 Stainless(Natural)(Std.), Flat E1 Brass(Mirror Chrome Plated), Flat E2 Brass(Nickel Plated), Flat F3 Al alloy(Black Anodized) (Std.), Flat
<p>Panel Cutout</p>	<p>Panel Cutout</p>

Panel thickness: 10.0mm(.394”) Max.

Specifications and dimensions are subject to change.

For the latest product information, please visit our website at www.pacer.com.tw or email us at pacer@mail.ece.com.tw



Actuator type

Unit: Inch/mm

F Flat button	H High button	R Round, without Led only
	<p>Ring(Moveable) light type is inapplicable</p> <p>Only for 0, R, D, P light</p>	<p>Standard for A0 body</p>

Light type

Unit: Inch/mm

0 Without Led	R Ring(Fixed)	P Power symbol
		<p>Power logo illuminated</p> <p>Only for D0, F3 body</p>
D Spot	E Ring(Moveable)	E1 Ring(Moveable) + Power symbol
<p>Spot illuminated</p> <p>Only for A0, C3, D0, F3 body Only for F actuator</p>	<p>Only for F actuator</p>	<p>Power logo illuminated</p> <p>Only for D0, F3 body</p>

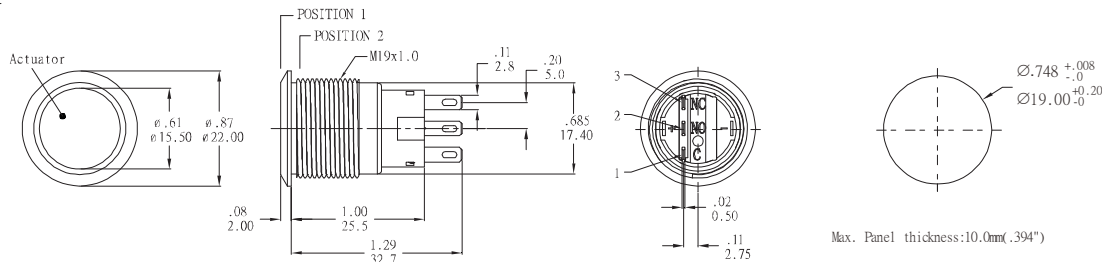
Dimensions

Unit: Inch/mm

Flat button type

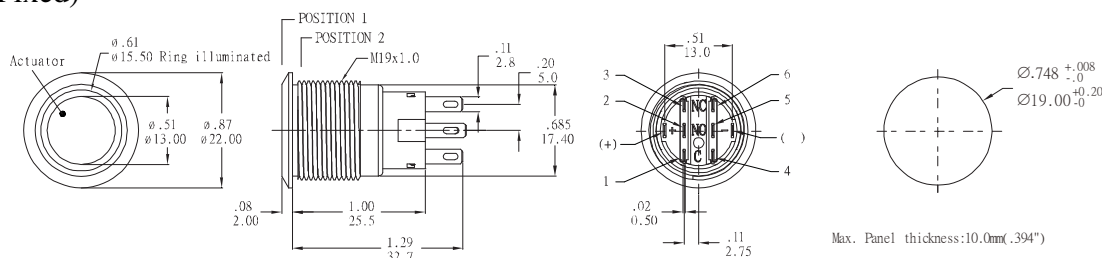
Part No. Shown: PB19-A0F1□0-M1S

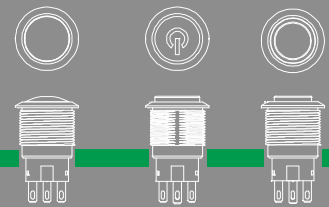
0 Without Led



Part No. Shown: PB19-A0F2□R-□□-M1S

R Ring light(Fixed)





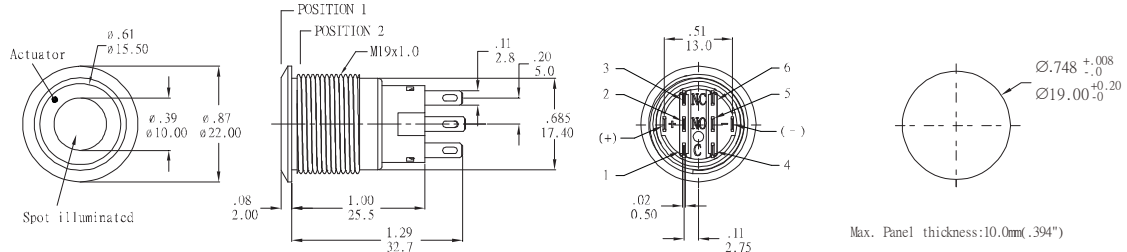
Dimensions

Unit: Inch/mm

Flat button type

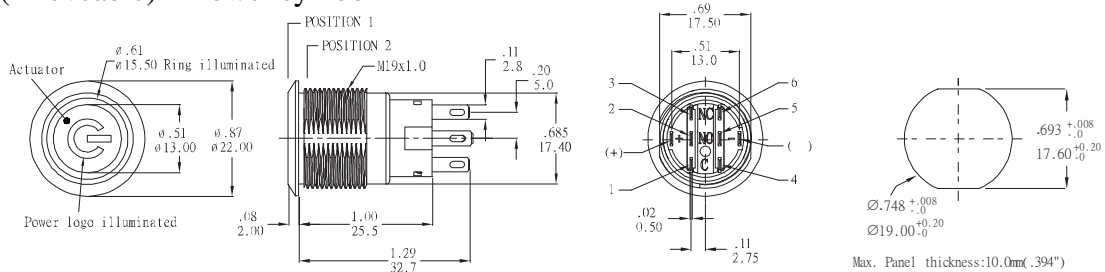
Part No. Shown: PB19-A0F2□□D-□□-M1S

D Spot light



Part No. Shown: PB19-D0F2□□E1-□□-M1S

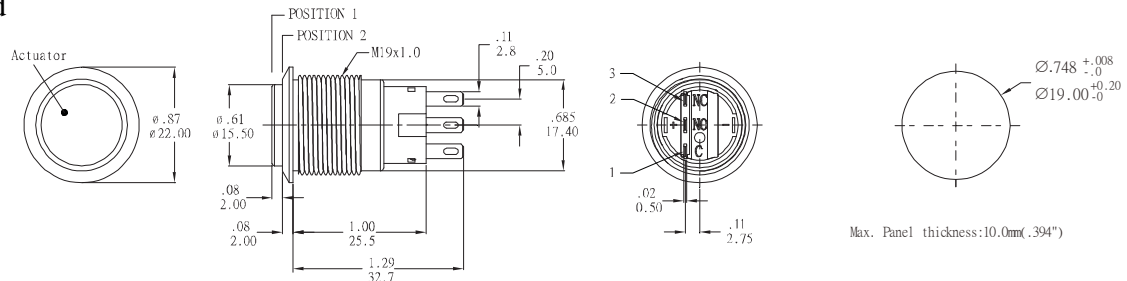
E1 Ring light (Moveable) + Power symbol



High button type

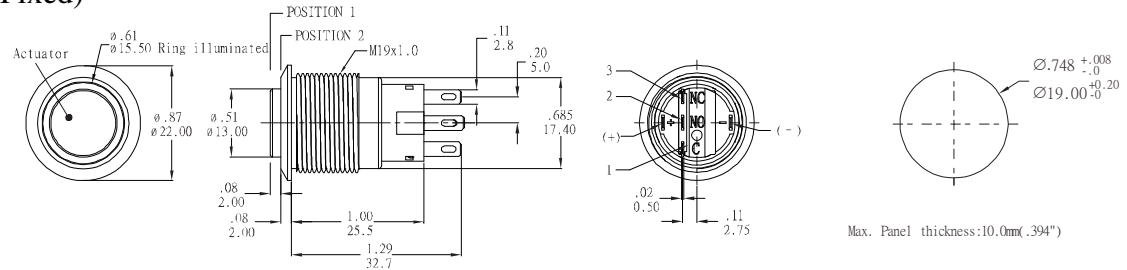
Part No. Shown: PB19-A0H1□□0-M1S

0 Without Led



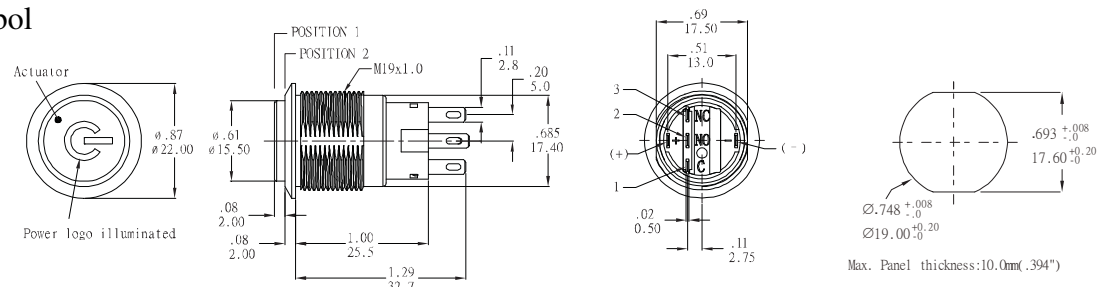
Part No. Shown: PB19-A0H1□□R-□□-M1S

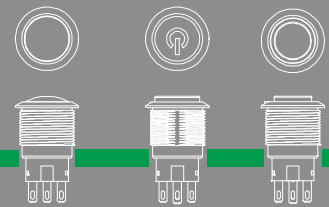
R Ring light (Fixed)



Part No. Shown: PB19-D0H1□□P-□□-M1S

P Power symbol





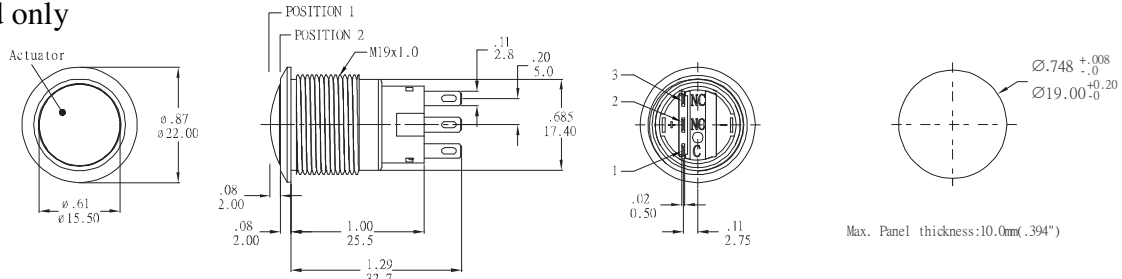
Dimensions

Unit: Inch/mm

Round button type

Part No. Shown: PB19-A0R1□0-M1S

0 Without Led only

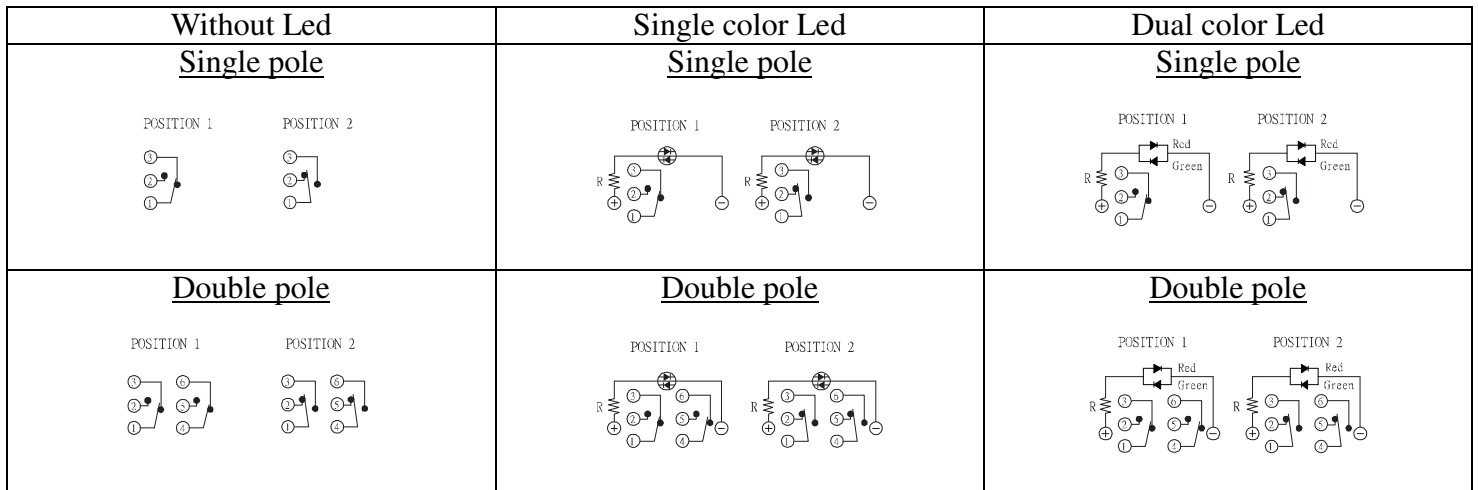


Led Color

Single color Led			
0	Without Led	5	Yellow
1	White	6	Green
3	Red	7	Blue

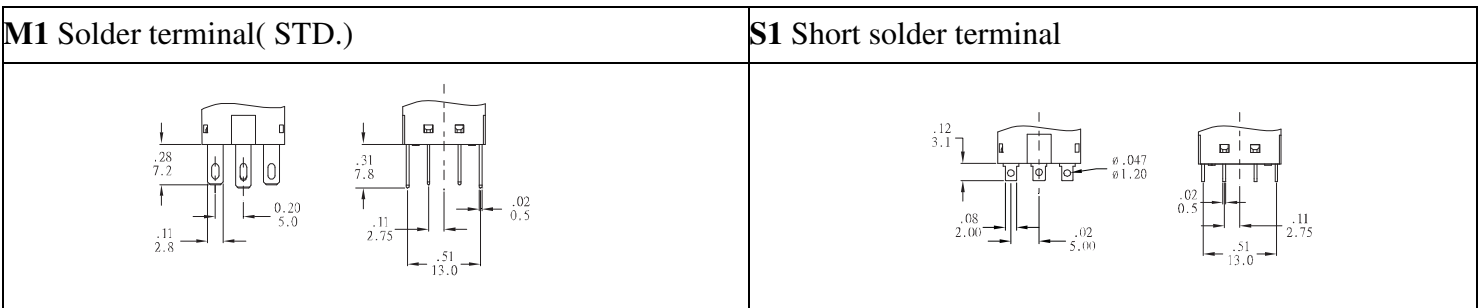
Dual color Led			
A	Red + Green	G	Red + Yellow
B	Red + Blue	H	Green + Yellow
D	Blue + Yellow	J	Orange + Green
P	Blue + Green		

Circuit

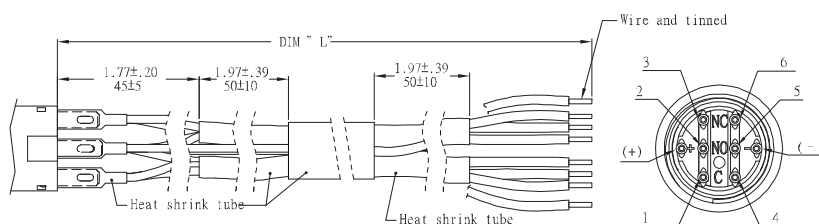


Termination

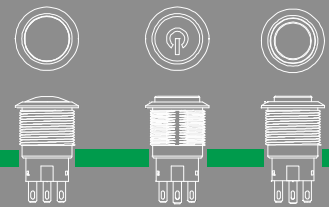
Unit: Inch/mm



T□ Wire leads UL3385 18 AWG(Flying lead terminal)



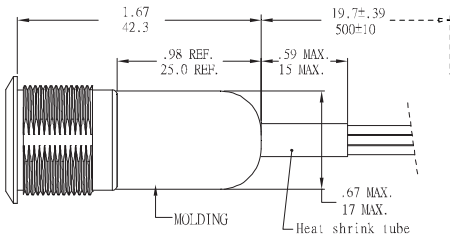
T1	Flying lead terminals L=500mm
T2	Flying lead terminals L=1000mm
T3	Flying lead terminals L=1500mm
T4	Flying lead terminals L=2000mm



Termination

Unit: Inch/mm

D1 Molding, 500mm wire leads UL3385 18 AWG



Wires:

Yellow wire - Terminal 1 and 4

Purple wire - Terminal 2 and 5

Green wire - Terminal 3 and 6

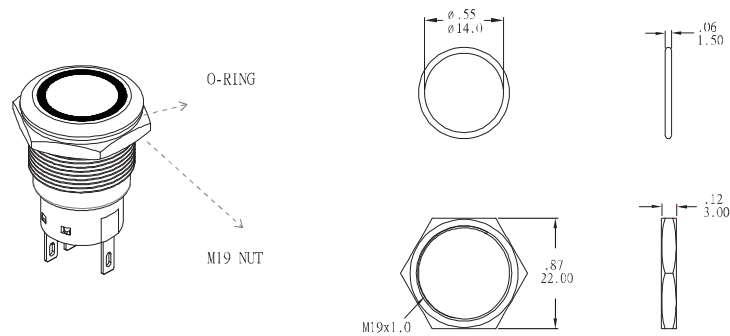
Red wire - LED (+) Positive

Black wire - LED (-) Negative

* Please consult sales for additional wire options.

Assembled view

Unit: Inch/mm



O-RING INSTALLATION

Proposal	In front of the panel	Behind the panel
Installation Diagram		