

Multilayer Chip Inductors – PBCMS SERIES

AEC-Q200 Qualified models available.

Feature

The PBCMS series can be used on particularly high current circuits due to its extremely low DC resistance. It can meet the power line to a maximum of DC-10A.

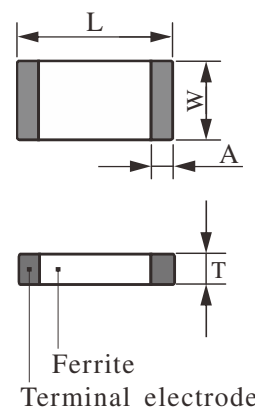
Application

This series is suitable for very high DC current power line EMI suppression. For example:

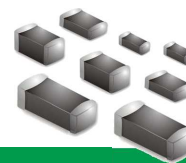
1. Various power lines of electronic equipment.
2. Mother board, tablet PC, notebook, desktop computers and peripheral equipment.
3. DSC, DVC, LCD Television, Set Top Box.
4. Digital communication equipment.
5. Various automotive electronics.

Dimensions

Unit: mm/ (Inch)



TYPE	L	W	T	A
PBCMS160808	1.6±0.15 (0.063±0.006)	0.8±0.15 (0.031±0.006)	0.8±0.15 (0.031±0.006)	0.2~0.6 (0.008~0.024)
PBCMS201209	2±0.2 (0.079±0.008)	1.25±0.2 (0.049±0.008)	0.9-0.2/+0.15 (0.035-0.008/+0.006)	0.2~0.8 (0.008~0.031)
PBCMS321611	3.2±0.2 (0.126±0.008)	1.6±0.2 (0.063±0.008)	1.1±0.2 (0.043±0.008)	0.4~1 (0.016~0.039)
PBCMS403022	4.06±0.2 (0.16±0.008)	3.05±0.2 (0.12±0.008)	2.28±0.2 (0.09±0.008)	0.69~1.09 (0.027~0.043)
PBCMS451616	4.5±0.2 (0.177±0.008)	1.6±0.2 (0.063±0.008)	1.6±0.2 (0.063±0.008)	0.6~1 (0.024~0.039)
PBCMS453215	4.5±0.2 (0.177±0.008)	3.2±0.2 (0.126±0.008)	1.5±0.2 (0.059±0.008)	0.6~1 (0.024~0.039)
PBCMS565018	5.59±0.51 (0.22±0.02)	5.08±0.25 (0.2±0.01)	1.8±0.25 (0.071±0.01)	0.51~1.01 (0.02~0.04)
PBCMS853022	8.5±0.2 (0.335±0.008)	3.05±0.2 (0.12±0.008)	2.28±0.2 (0.09±0.008)	0.69~1.09 (0.027~0.043)



Multilayer Chip Inductors – PBCMS SERIES

Ratings

Type: PBCMS160808

PART NO	IMPEDANCE (Ω) AT100 MHz 500mV	DC RESISTANCE (Ω) Max	※ RATED CURRENT (mA) Max
PBCMS160808A260	26±25%	0.008	6000
PBCMS160808A300 RDC01 5A	30±25%	0.01	5000
PBCMS160808H100 4A	10±25%	0.025	4000

Type: PBCMS201209

PART NO	IMPEDANCE (Ω) AT100 MHz 500mV	DC RESISTANCE (Ω) Max	※ RATED CURRENT (mA) Max
PBCMS201209A121 5A RDC015	120±25%	0.015	5000
PBCMS201209A8005ARDC01	80±25%	0.01	5000
PBCMS201209A3004ARDC015	30±25%	0.015	4000

Type: PBCMS321611

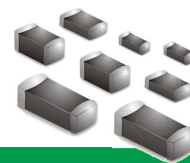
PART NO	IMPEDANCE (Ω) AT100 MHz 500mV	DC RESISTANCE (Ω) Max	※ RATED CURRENT (mA) Max
PBCMS321611A121 4A	120±25%	0.02	4000
PBCMS321611A700 4A	70±25%	0.02	4000

Type: PBCMS403022

PART NO	IMPEDANCE (Ω) AT100 MHz 500mV	DC RESISTANCE (Ω) Max	※ RATED CURRENT (mA) Max
PBCMS403022I560 10A	56±25%	0.004	10000

Type: PBCMS451616

PART NO	IMPEDANCE (Ω) AT100 MHz 500mV	DC RESISTANCE (Ω) Max	※ RATED CURRENT (mA) Max
PBCMS451616A600	60±25%	0.008	6000
PBCMS451616A800	80±25%	0.008	6000



Multilayer Chip Inductors – PBCMS SERIES

Ratings

Type: PBCMS453215

PART NO	IMPEDANCE (Ω) AT100 MHz 500mV	DC RESISTANCE (Ω) Max	※ RATED CURRENT (mA) Max
PBCMS453215A121 4A	120±25%	0.02	4000
PBCMS453215A600	60±25%	0.008	6000
PBCMS453215K881 4A	880±25%	0.025	4000

Type: PBCMS565018

PART NO	IMPEDANCE (Ω) AT100 MHz 500mV	DC RESISTANCE (Ω) Max	※ RATED CURRENT (mA) Max
PBCMS565018I251 4A	250±25%	0.015	4000

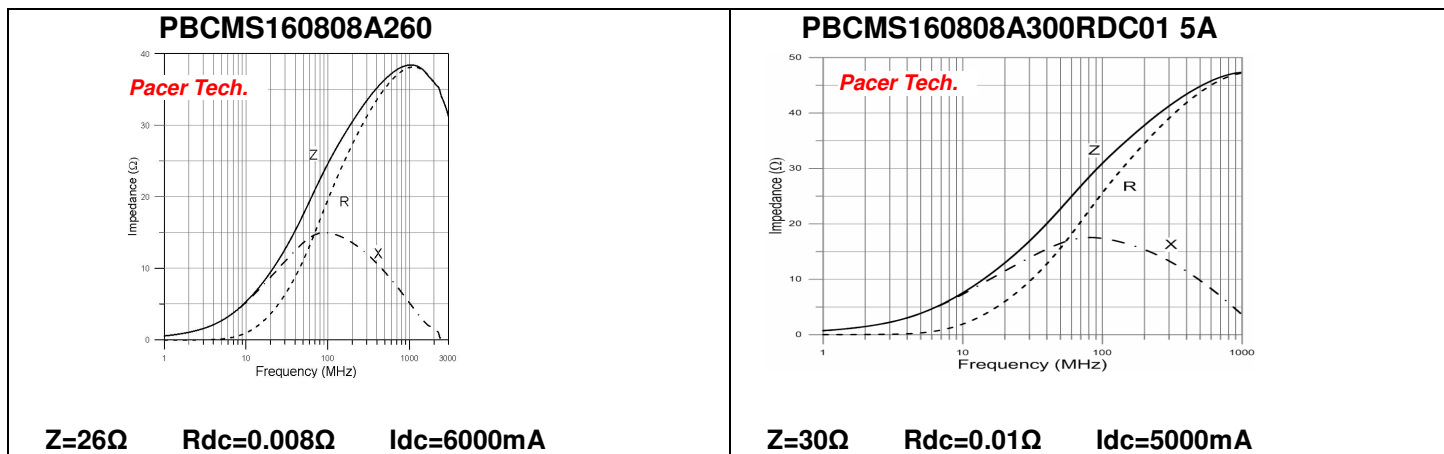
Type: PBCMS853022

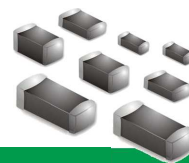
PART NO	IMPEDANCE (Ω) AT100 MHz 500mV	DC RESISTANCE (Ω) Max	※ RATED CURRENT (mA) Max
PBCMS853022I101 10A	100±25%	0.004	10000

※ The maximum rated current : the DC current value having temperature increased 40°C after thru DC current 2 hours at ambient temperature.

TYPICAL ELECTRICAL CHARACTERISTICS

Z, R, X vs. FREQUENCY CHARACTERISTICS

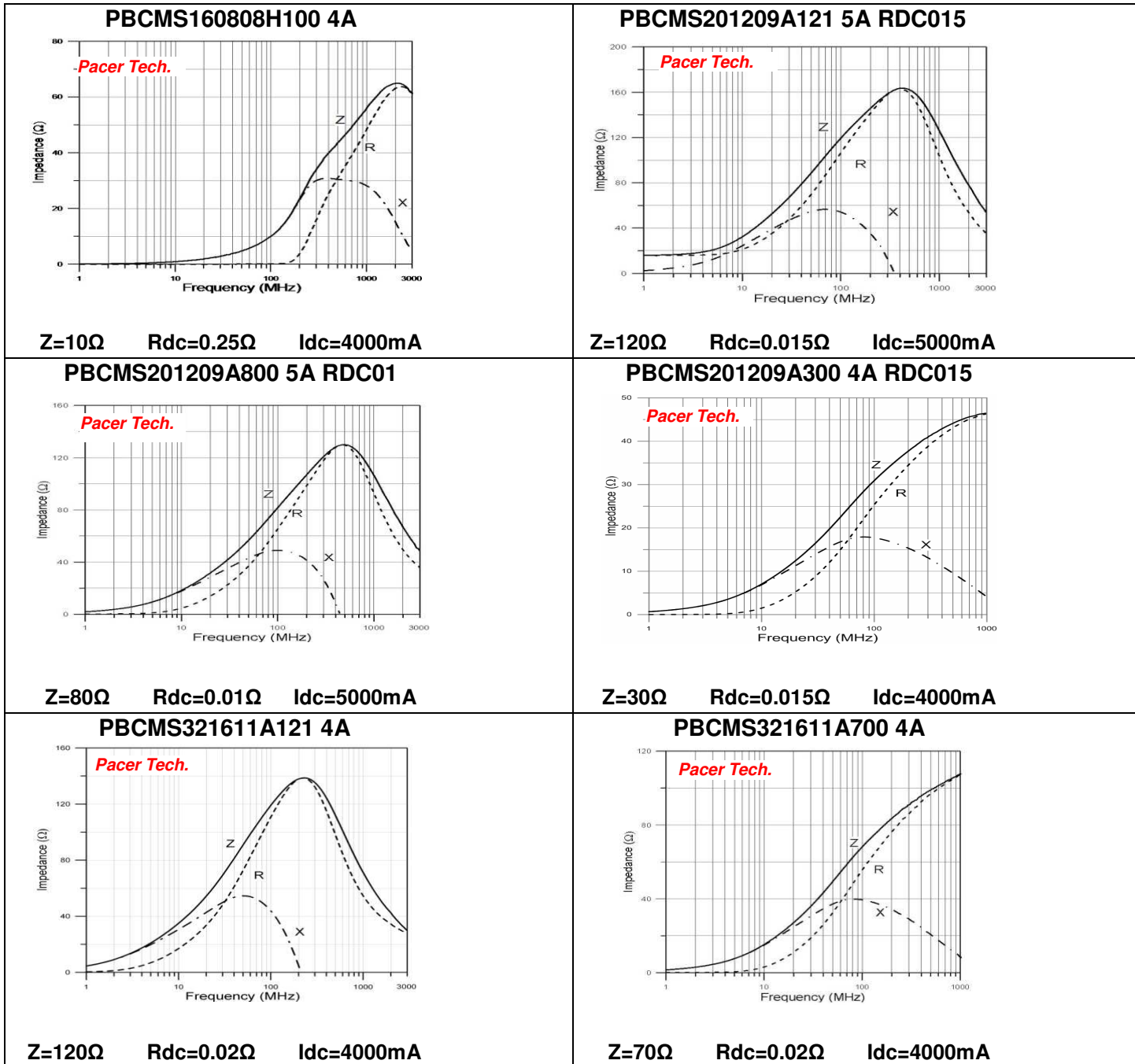


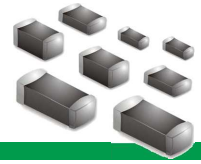


Multilayer Chip Inductors – PBCMS SERIES

TYPICAL ELECTRICAL CHARACTERISTICS

Z, R, X vs. FREQUENCY CHARACTERISTICS

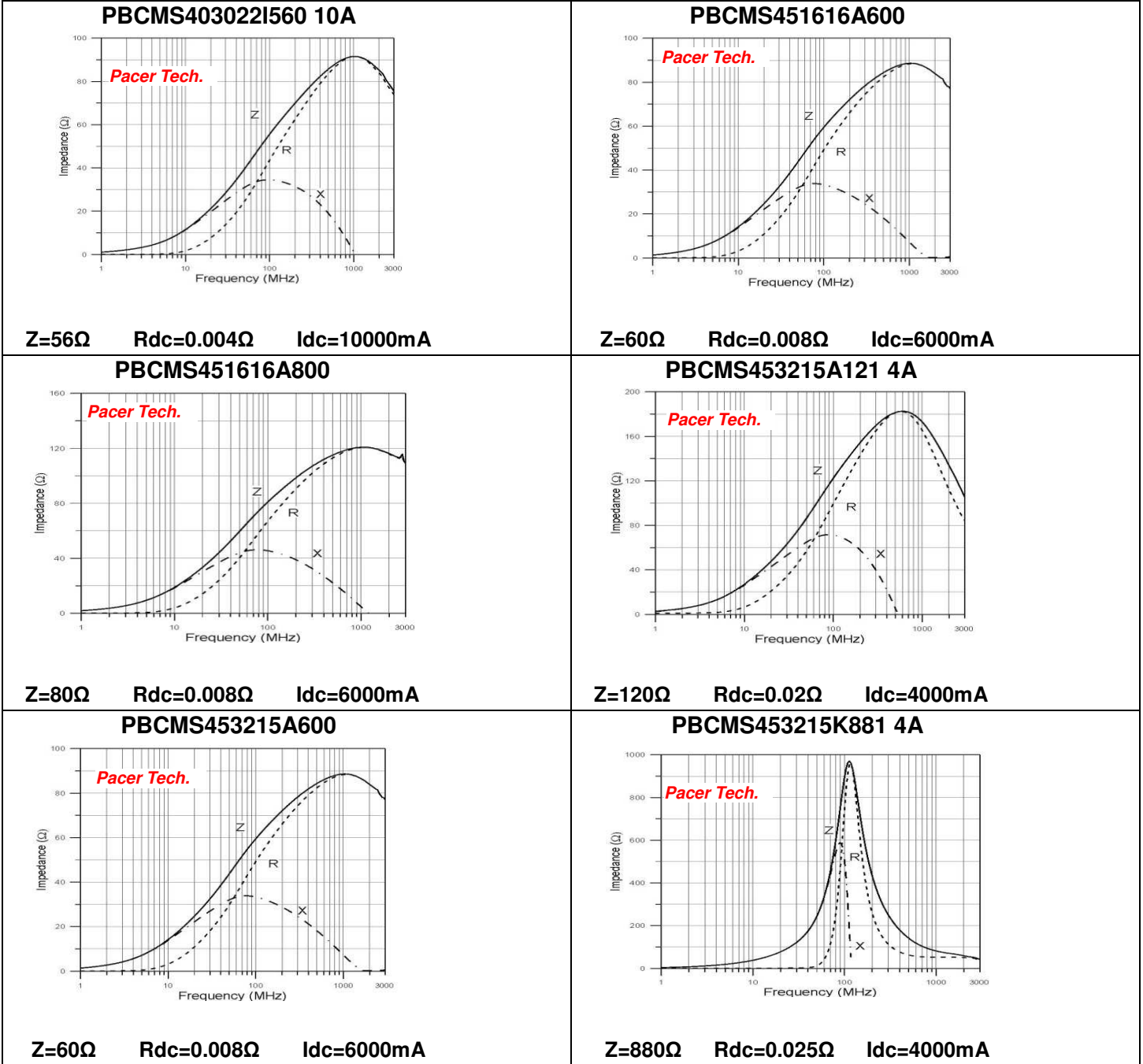


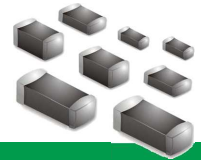


Multilayer Chip Inductors – PBCMS SERIES

TYPICAL ELECTRICAL CHARACTERISTICS

Z, R, X vs. FREQUENCY CHARACTERISTICS





Multilayer Chip Inductors – PBCMS SERIES

TYPICAL ELECTRICAL CHARACTERISTICS

Z, R, X vs. FREQUENCY CHARACTERISTICS

