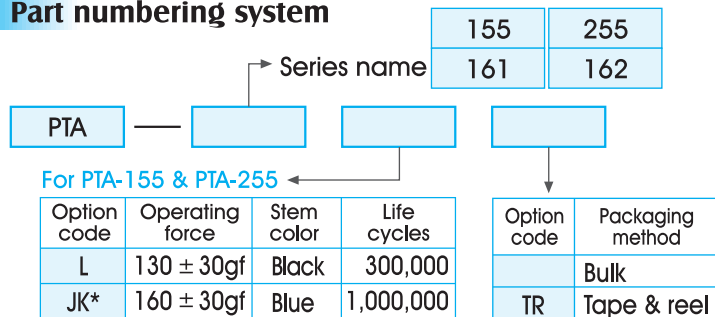


## 6.2 x 6.2 mm SMD Type

### Features

PTA-155: Ground, Economical SMD, Reflow soldering  
 PTA-161: Dust proof, Thin type, Reflow soldering  
 PTA-255: Long life, Ground, Reflow soldering, Low profile

### Part numbering system



\*To separate longer life cycles,  
 PTA-155JK and PTA-255 JK's case is gray.

#### For PTA-161

Option code	Operating force	Stem color	Life cycles
L	130 ± 30gf	No stem	300,000

### Applications

PTA-155 & PTA-161: Audio, TV, VCR, DVD, PDA  
 PTA-255: Notebook, Audio, Digital TV, VCR, DVD

### Specifications

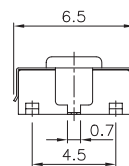
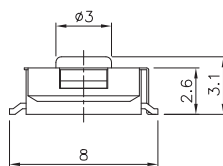
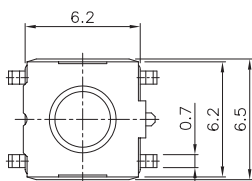
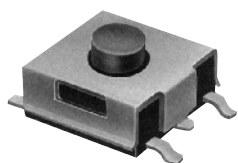
1. Rating: DC12V, 50mA Max.
2. Contact resistance: 100mΩ Max.
3. Travel: 0.25mm ± 0.1

### Packaging unit

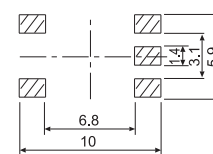
1. Bulk: 1,000pcs / bag
2. Reel: PTA-155: 1,500pcs/ reel  
 PTA-161: 2,500pcs/ reel  
 PTA-162: 2,500pcs/ reel  
 PTA-255: 2,000pcs/ reel

### Dimensions (unit:mm)

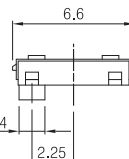
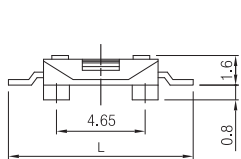
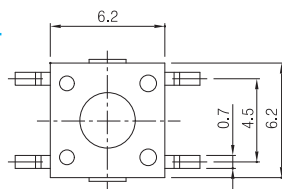
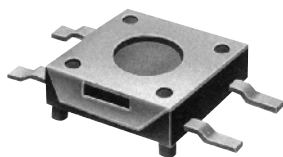
#### PTA-155



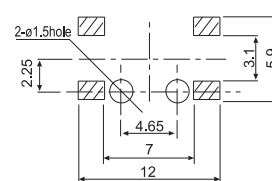
#### P. C. B. Layout



#### PTA-161L / 162L

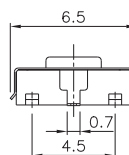
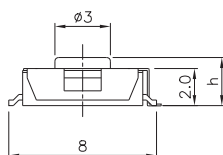
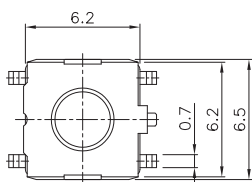


#### P. C. B. Layout

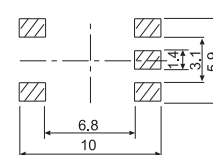


L=10.0mm (PTA-161L)  
 L=0.8mm (PTA-162L)

#### PTA-255



#### P. C. B. Layout



h=2.5mm (PTA-255)  
 h=3.1mm (PTA-255X)