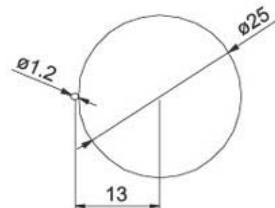
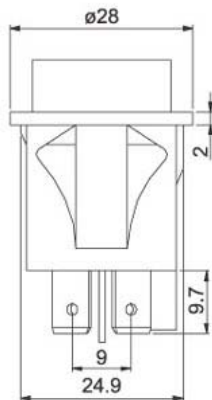
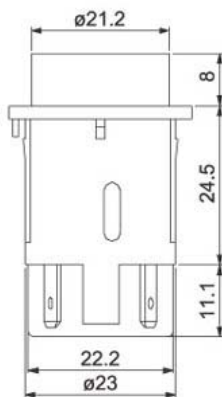


# Push Button Switch PRL5-1 Series

## SPECIFICATIONS

1. Rating: 10(4)A, 250VAC T125  
16(6)A, 250VAC T125 
2. Contact resistance: 20mΩ Max.
3. Insulation resistance: DC 500V 100MΩ Min.
4. Dielectric strength: 1,500VAC for 1 minute

## DIMENSIONS (Unit:mm)



## PART NUMBERING SYSTEM

{1} PRL5-1 {2} {3} Rocker / Housing

{1} Series: PRL5-1: Push button switch

{2} Circuit:

A: 4P (ON)-OFF W/ Lamp D: 4P ON OFF-W/ Lamp

B: 4P (ON)-OFF E: 4P ON-OFF

C: 2P (ON)-OFF F: 2P ON-OFF

{3} Color: B: Black, G: Green, H: Gray, I: Ivory,

R: Red, W: White, Y: Yellow