

# Push Button Switch PB-47 Series

## SPECIFICATIONS

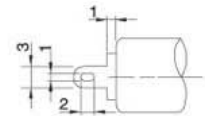
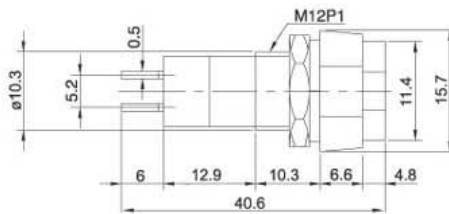
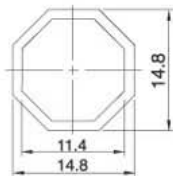
1. Rating: 1A, 125VAC
2. Contact resistance: 30mΩ Max.
3. Insulation resistance: 100MΩ Min. at 500VDC
4. Dielectric strength: 1,000VAC for 1 minute

## PART NUMBERING SYSTEM

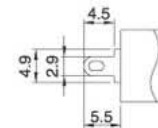
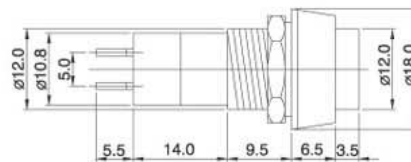
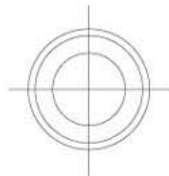
{1}	PB-47	{2}		{3}		{4}	
{1} Series: PB-47: Push button switch {2} Model: 21, 22, 23, 40, 57, 59 {3} Switching function: A: 2P ON-OFF, B: 2P (ON)-OFF, C: 2P ON-(OFF) *( ):Momentary {4} Color of button: B: Black, BL: Blue, G: Green, R: Red, W: White, Y: Yellow							

## DIMENSIONS (Unit:mm)

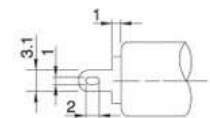
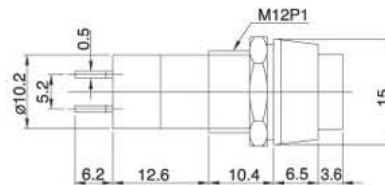
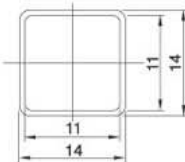
PB-4721A, B, C



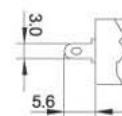
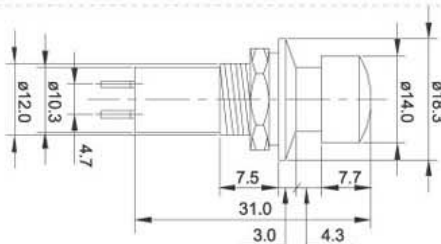
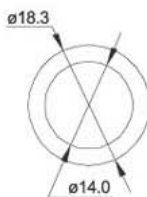
PB-4722A, B, C



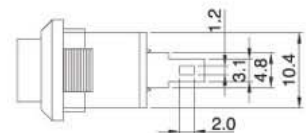
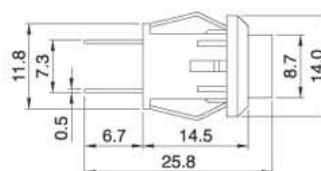
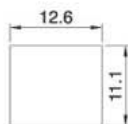
PB-4723A, B, C



PB-4740A, B, C



PB-4757B, C



PB-4759A, B

